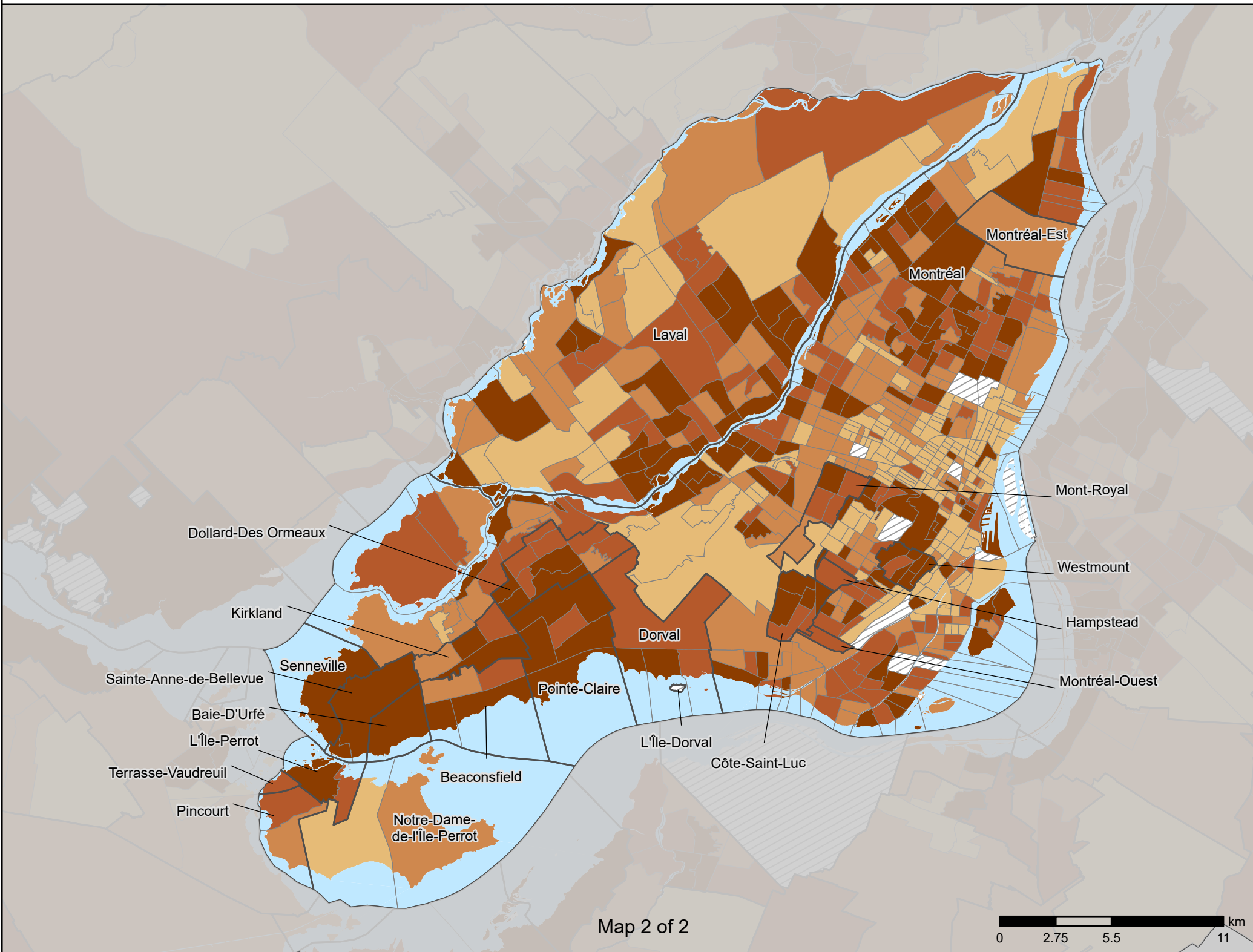


Montréal CMA

Percentage of the population aged 65 and over in 2021,
by census tract (CT)

| Number of CTs | |
|--------------------|-----|
| ≥ 21.0% | 260 |
| 17.0% to < 21.0% | 214 |
| 13.0% to < 17.0% | 252 |
| < 13.0% | 260 |
| Not available | 18 |
| Census subdivision | |



Map 2 of 2

