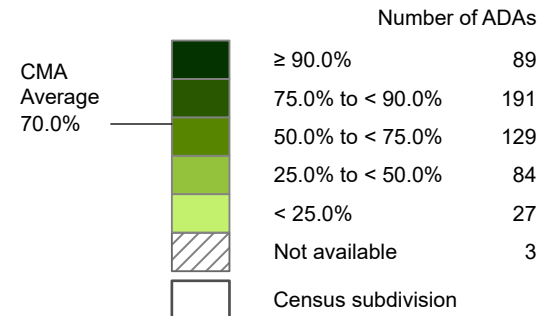


Montreal CMA

Percentage of workers using French at work, 2021,
by aggregate dissemination area
French used mainly¹, by place of residence

1. French used most often, excluding cases where it was used equally most often with English.

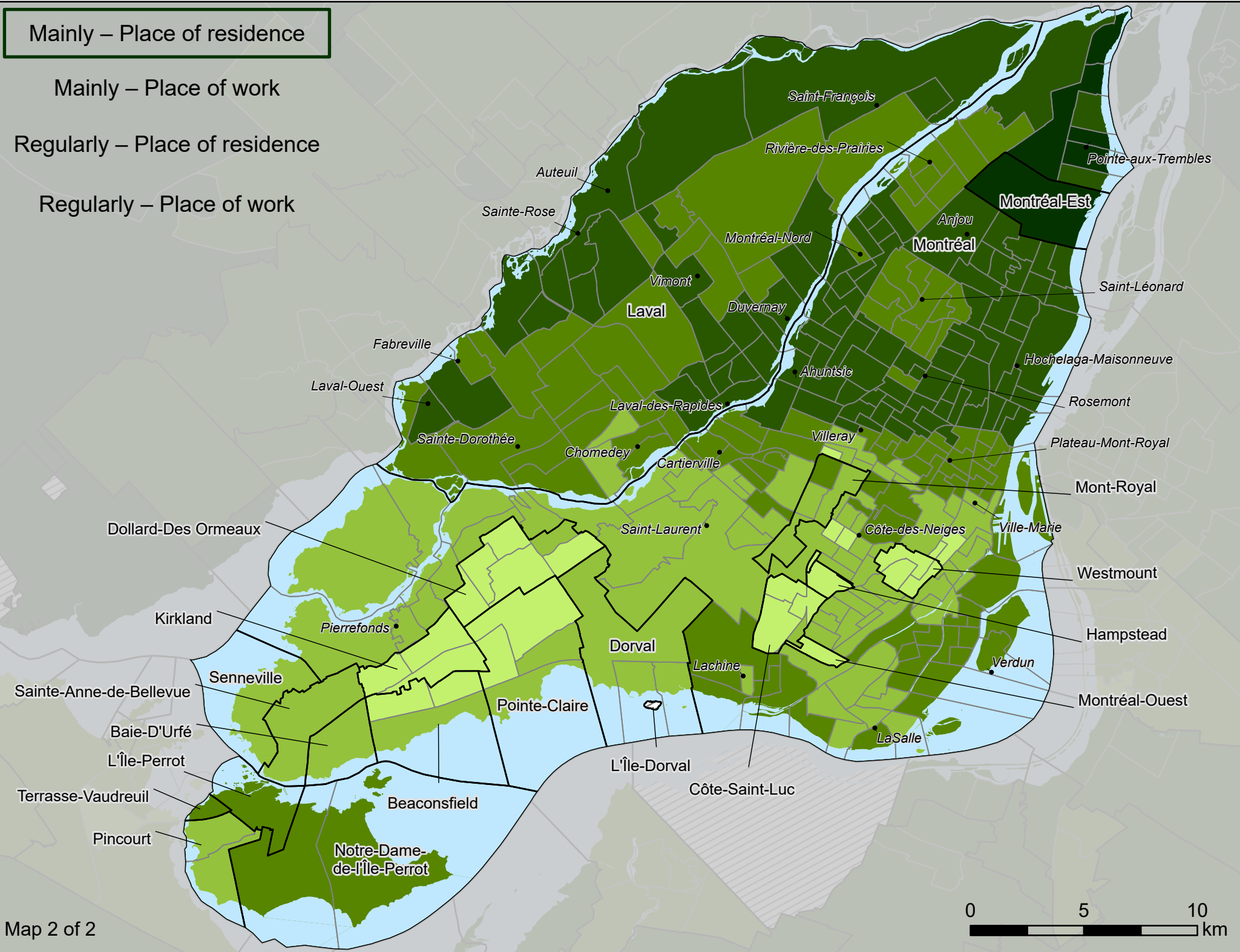


Mainly – Place of residence

Mainly – Place of work

Regularly – Place of residence

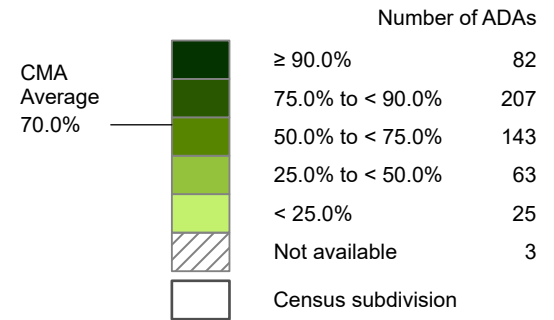
Regularly – Place of work



Montreal CMA

Percentage of workers using French at work, 2021,
by aggregate dissemination area
French used mainly¹, by place of work²

- 1. French used most often, excluding cases where it was used equally most often with English.
- 2. Includes only people with a usual place of work, and includes people usually working at home.

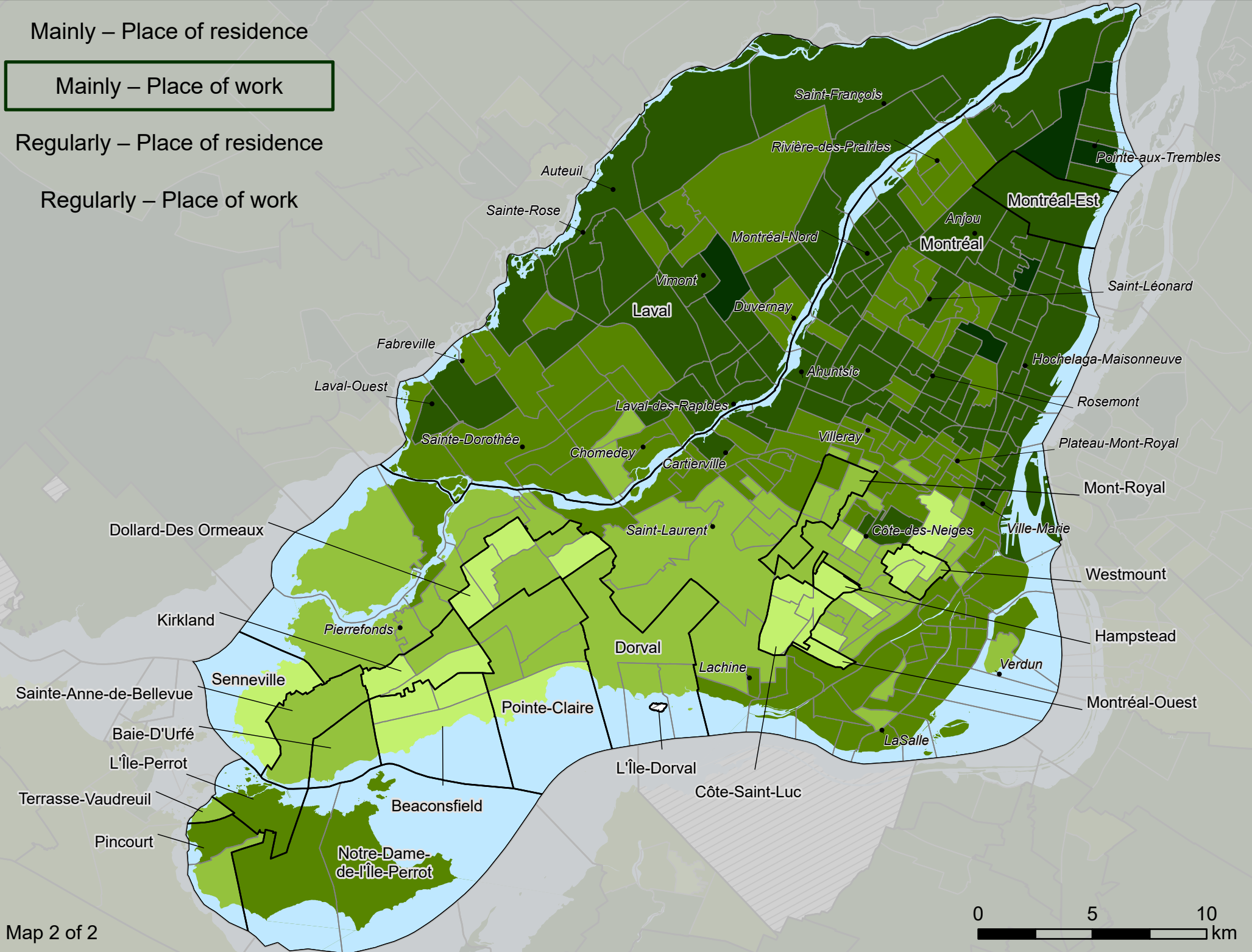


Mainly – Place of residence

Mainly – Place of work

Regularly – Place of residence

Regularly – Place of work



Montreal CMA

Percentage of workers using French at work, 2021,
by aggregate dissemination area
French used regularly at work, by place of residence

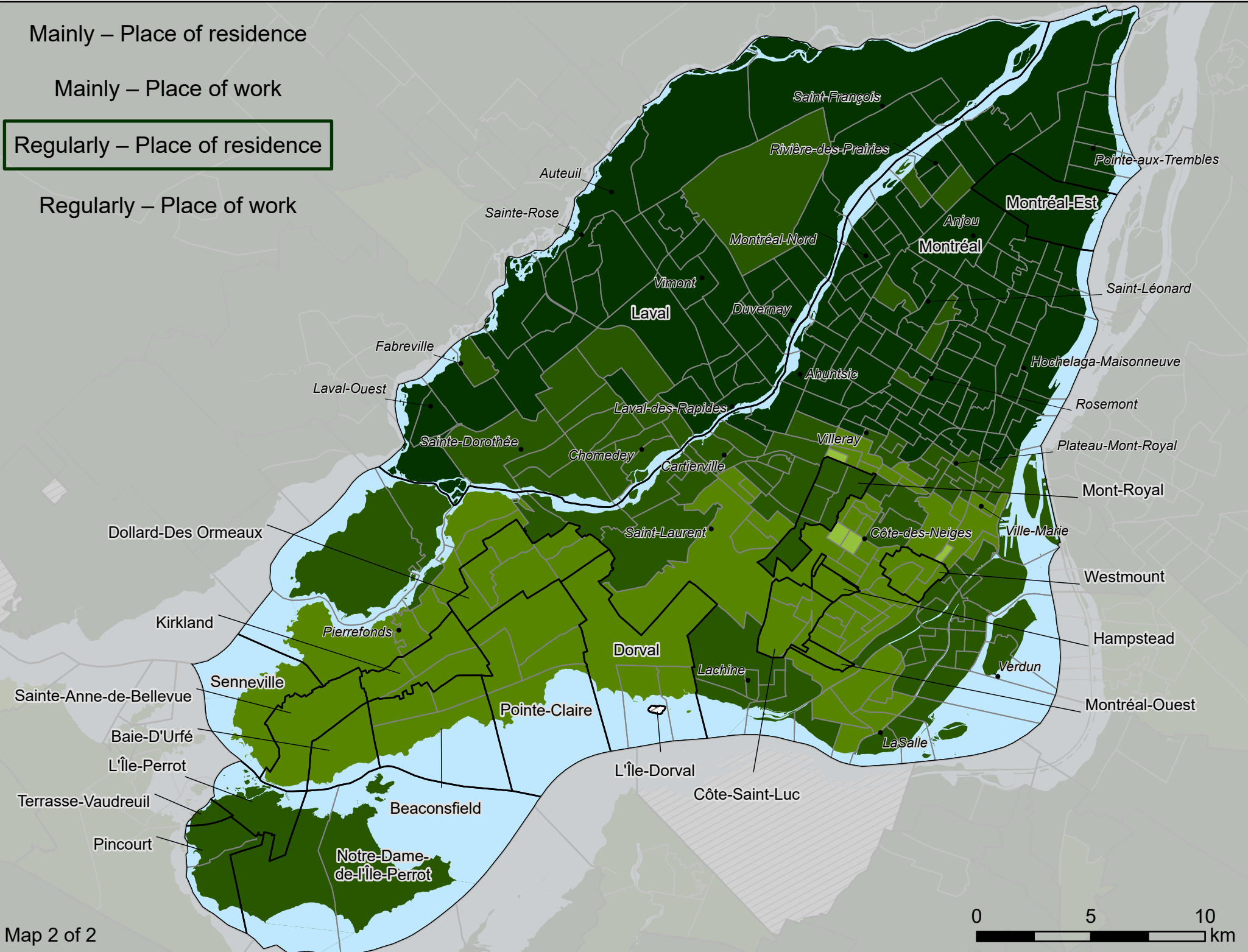
CMA Average	Number of ADAs
88.4%	315
≥ 90.0%	117
75.0% to < 90.0%	84
50.0% to < 75.0%	4
25.0% to < 50.0%	0
< 25.0%	3
Not available	3
Census subdivision	

Mainly – Place of residence

Mainly – Place of work

Regularly – Place of residence

Regularly – Place of work



Montreal CMA

Percentage of workers using French at work, 2021,
by aggregate dissemination area
French used regularly at work, by place of work¹

CMA Average	Number of ADAs	
88.6%	≥ 90.0%	328
	75.0% to < 90.0%	130
	50.0% to < 75.0%	62
	25.0% to < 50.0%	0
	< 25.0%	0
	Not available	3
	Census subdivision	

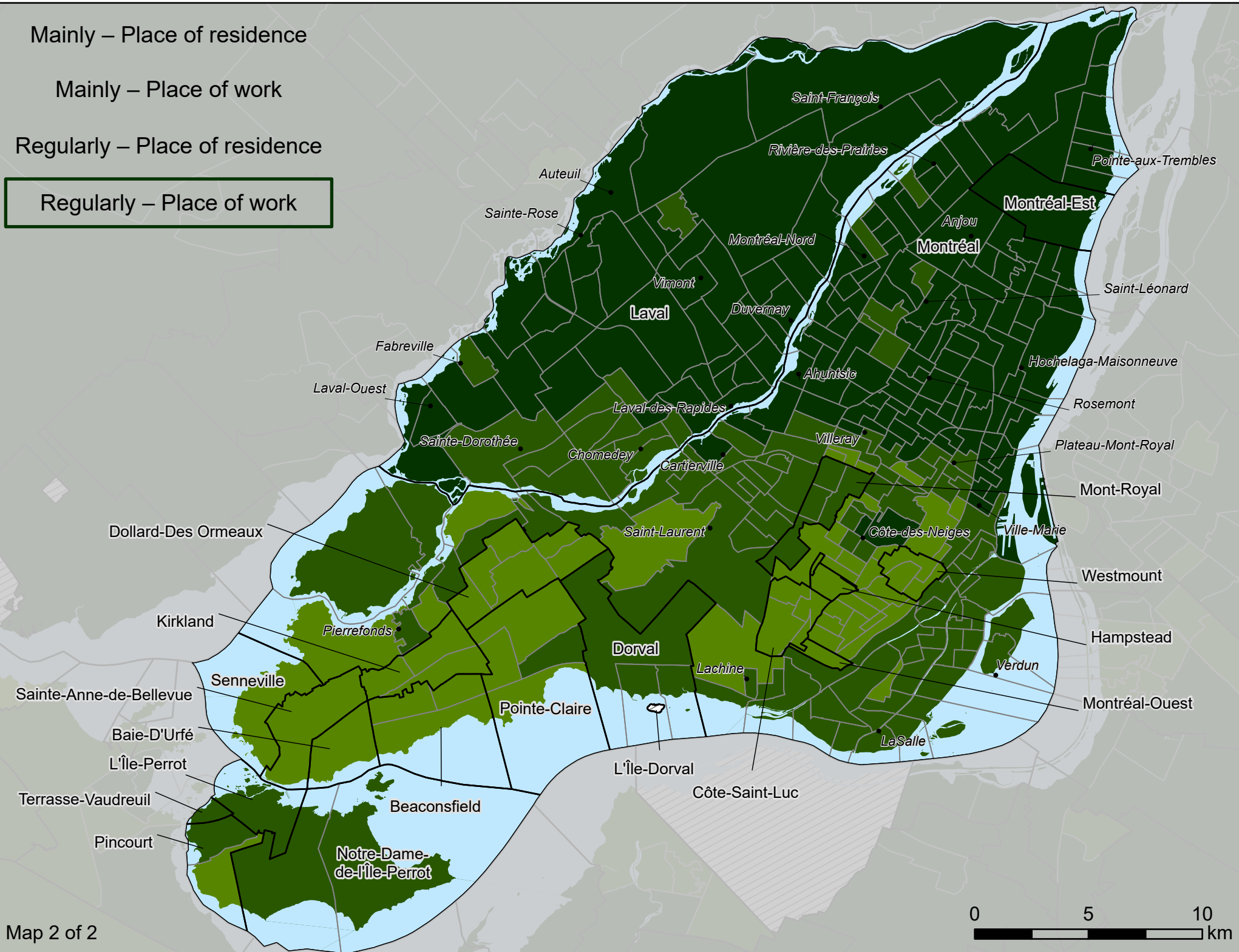
1. Includes only people with a usual place of work, and includes people usually working at home.

Mainly – Place of residence

Mainly – Place of work

Regularly – Place of residence

Regularly – Place of work



Map 2 of 2

