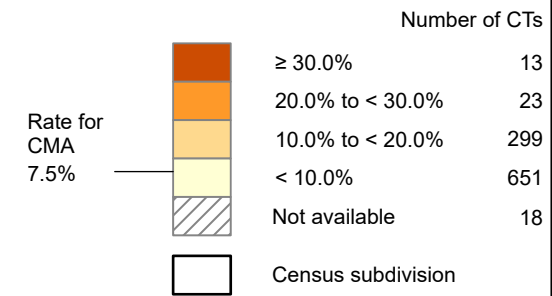
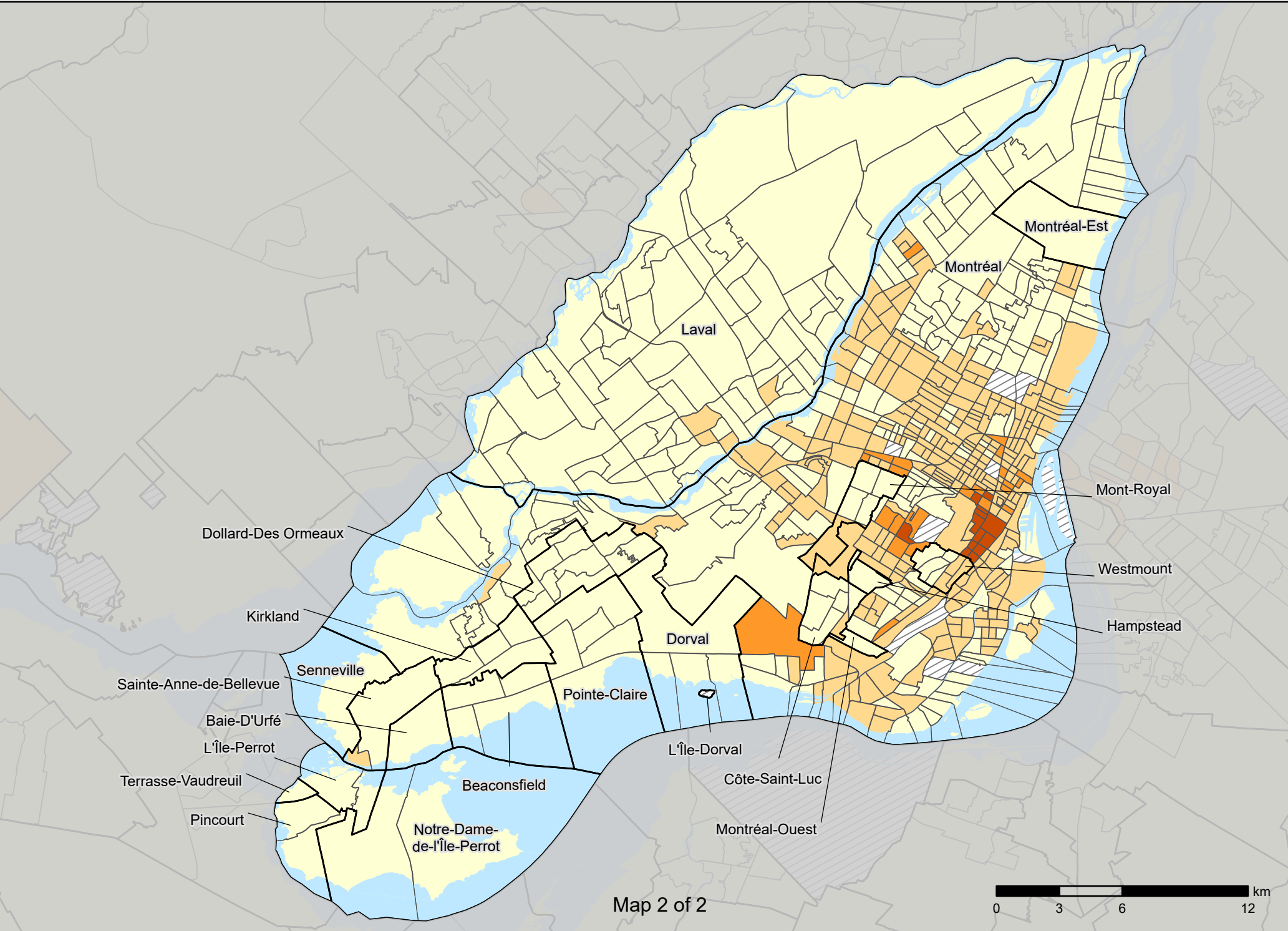


# Montréal CMA

## Percentage of the population in poverty<sup>1</sup> in 2020, by 2021 census tract (CT)



1. Based on the 2018 base of the Market Basket Measure (MBM), Canada's official poverty line. The MBM threshold for a four-person family in the CMA of Montréal was \$41,506 in 2020. The threshold varies for families of different sizes and for those living in communities that were not part of the CMA in 2016.



Map 2 of 2