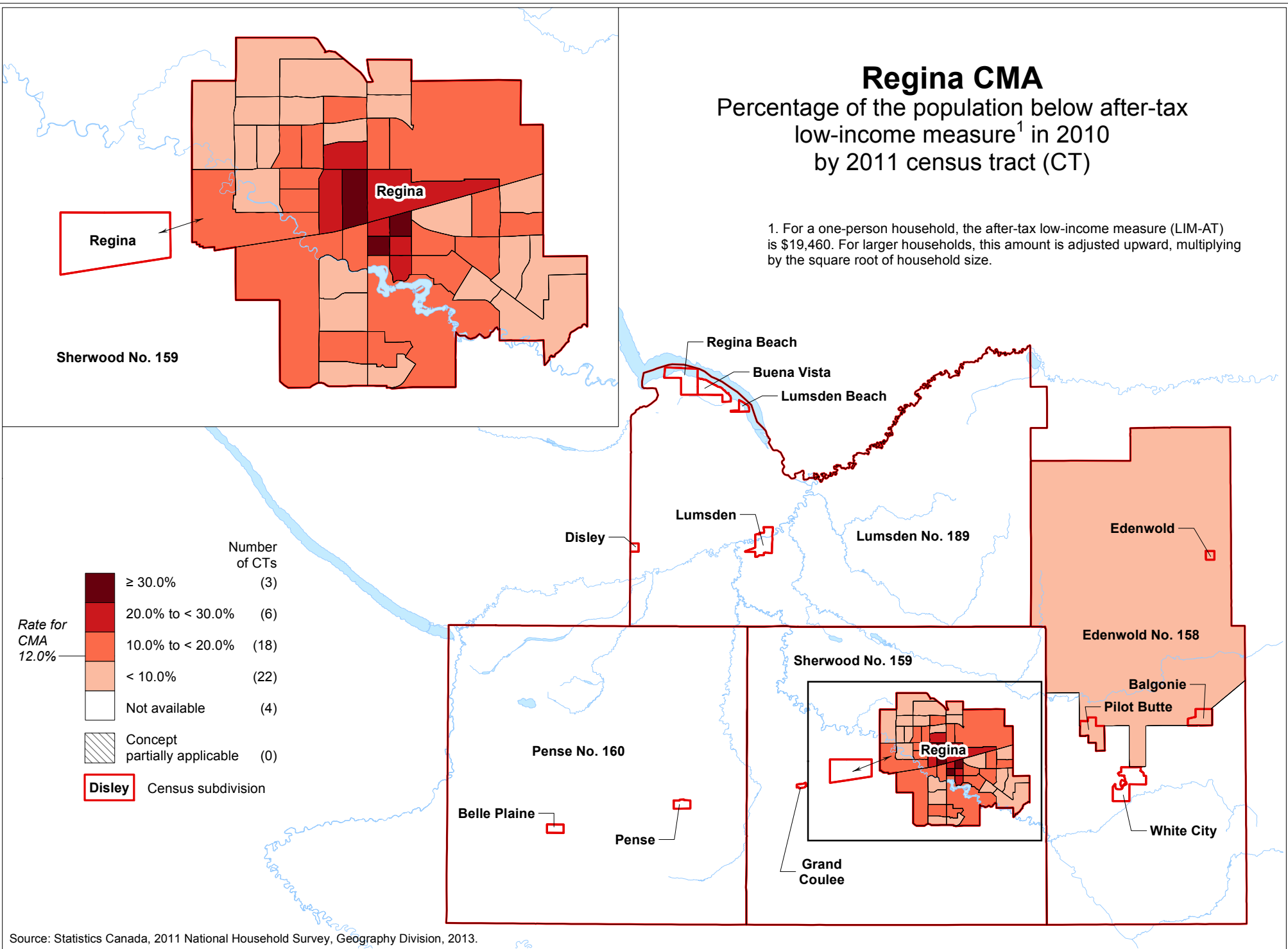


Regina CMA

Percentage of the population below after-tax low-income measure¹ in 2010 by 2011 census tract (CT)

1. For a one-person household, the after-tax low-income measure (LIM-AT) is \$19,460. For larger households, this amount is adjusted upward, multiplying by the square root of household size.



Rate for CMA	Number of CTs
≥ 30.0%	(3)
20.0% to < 30.0%	(6)
10.0% to < 20.0%	(18)
< 10.0%	(22)
Not available	(4)
Concept partially applicable	(0)

12.0%

Disley Census subdivision

Source: Statistics Canada, 2011 National Household Survey, Geography Division, 2013.